

Local Market Update – June 2013

A RESEARCH TOOL PROVIDED BY TRIANGLE MLS



Wake County

+ 12.0%

Change in
New Listings

+ 13.8%

Change in
Closed Sales

+ 2.3%

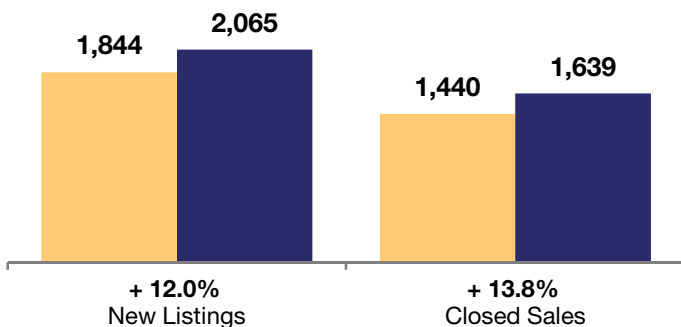
Change in
Median Sales Price

	June			Year to Date		
	2012	2013	+ / -	2012	2013	+ / -
New Listings	1,844	2,065	+ 12.0%	11,113	12,276	+ 10.5%
Closed Sales	1,440	1,639	+ 13.8%	6,252	8,070	+ 29.1%
Median Sales Price*	\$218,000	\$223,000	+ 2.3%	\$212,070	\$216,500	+ 2.1%
Average Sales Price*	\$259,450	\$264,547	+ 2.0%	\$248,297	\$254,585	+ 2.5%
Total Dollar Volume (in millions)*	\$373.6	\$433.6	+ 16.0%	\$1,552.0	\$2,054.5	+ 32.4%
Percent of Original List Price Received*	94.9%	96.7%	+ 1.9%	94.4%	96.0%	+ 1.8%
Percent of List Price Received*	97.3%	97.8%	+ 0.6%	97.1%	97.6%	+ 0.5%
Days on Market Until Sale	112	89	- 20.9%	118	97	- 17.2%
Inventory of Homes for Sale	7,259	6,295	- 13.3%	--	--	--
Months Supply of Inventory	7.4	5.0	- 32.6%	--	--	--

* Does not account for seller concessions. | Activity for one month can sometimes look extreme due to small sample size.

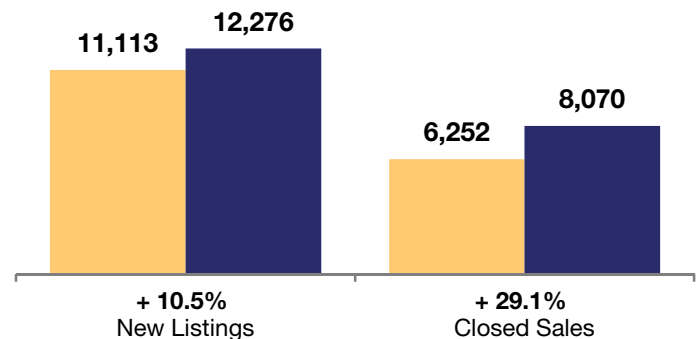
June

2012 2013



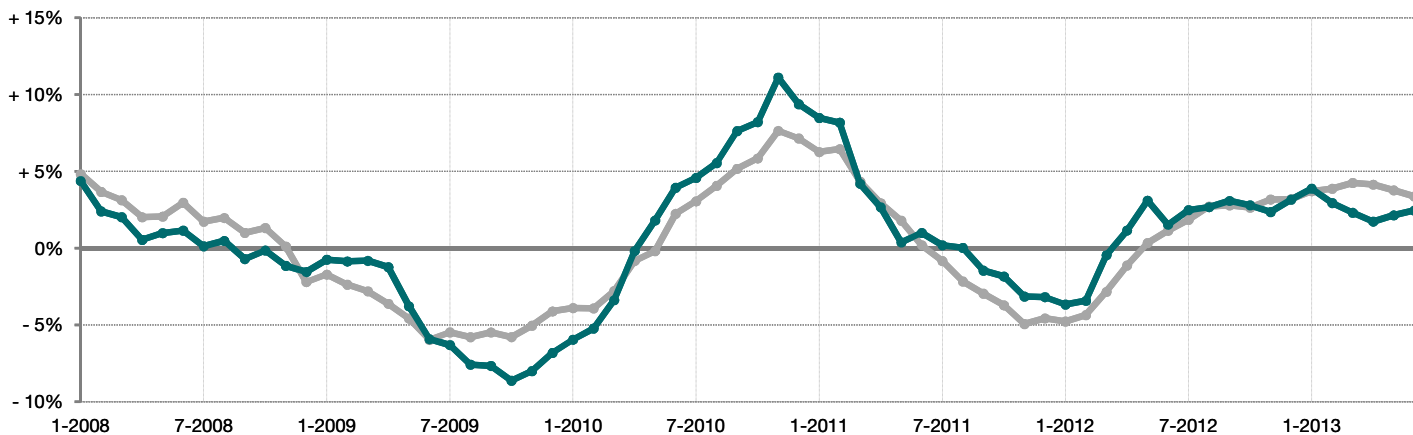
Year to Date

2012 2013



Change in Median Sales Price from Prior Year (6-Month Average)**

All MLS —
Wake County —



** Each dot represents the change in median sales price from the prior year using a 6-month weighted average. This means that each of the 6 months used in a dot are proportioned according to their share of sales during that period. | Current as of July 10, 2013. All data from Triangle Multiple Listing Service, Inc.. | Powered by 10K Research and Marketing.